



Educational Master Plan

Sierra College 2009-2019



Educational Master Plan

□ Purpose

“Inform instructional program development and resource acquisition efforts, particularly where a long planning or gestation phase is indicated.”

“Establish a context for initiatives set forth in the shorter-term District Strategic Plan.”

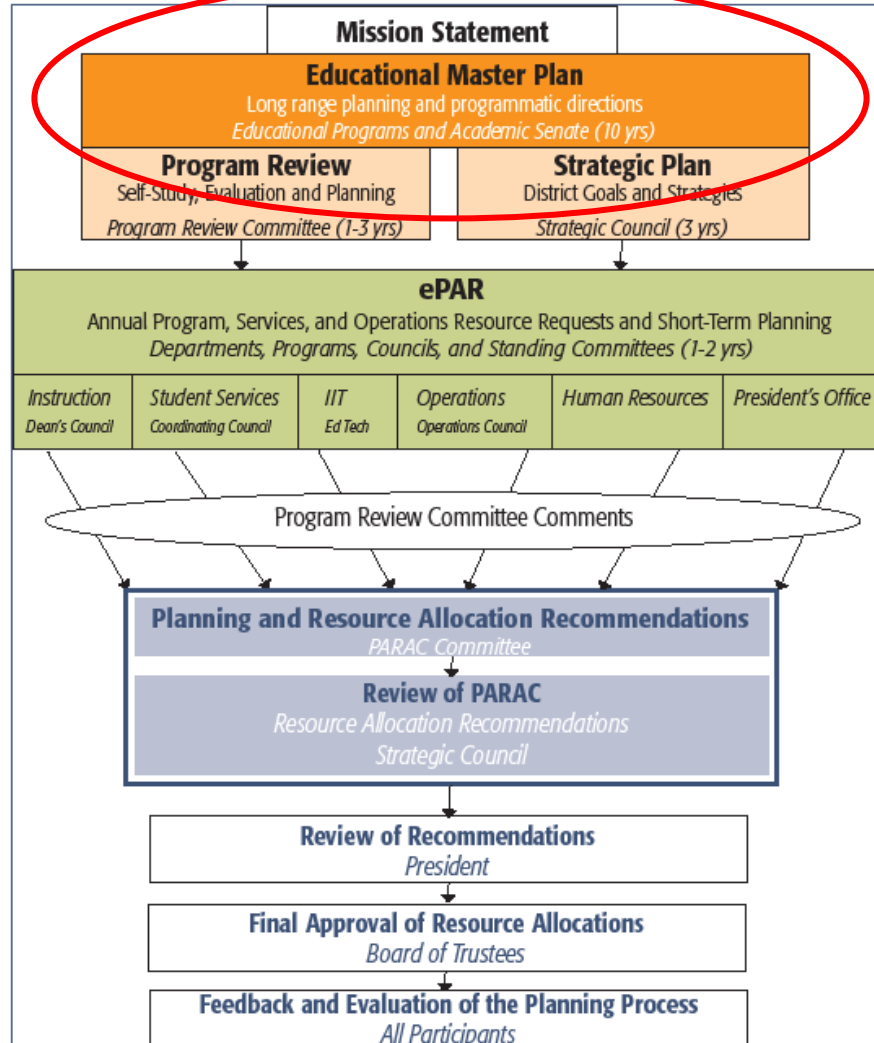


EMP – Background

- Originated in the '60's
- Required for state-funded facilities
- Foundation document

SIERRA COLLEGE

Resource Request and Allocation Process





Educational Master Plan

- 10 year outlook
- Broad view
- External and internal environments
- Framework for strategic planning
- Informs other master plans



EMP - Organization

- Introduction
 - Purpose, background, process, guiding principles
- Environment
 - External
 - Internal
 - Goals and Planning



EMP – Organization

- Planning Implications
 - Facilities
 - Staffing
 - Technology



EMP - Organization

- Implementation
 - Planning Process and Cycle
- Appendices and Resources
 - Program Evaluation Materials



EMP - Highlights

- Signature, Emerging, & Potential Programs (Pp. 19)
- Enrollment Change By Program (Pp. 20-21)
- Enrollment Projections (Pp. 26-28)
- Planning Assumptions (Pp. 29-31)



EMP - Highlights

- Facilities Planning Implications
 - Rocklin
 - Existing Programs - Extensive renovations
 - Growth – New buildings or additions
 - Access/Egress issues



EMP - Highlights

- Facilities Planning Implications (cont.)
 - Centers
 - Gateway or ?????
 - Student Services, Operations, and Other Units
 - Winstead expansion
 - Office space



EMP – Highlights

- Staffing Implications
 - Full-time faculty
 - All Staff
 - Fewer retirements
 - Higher turnover rate
 - Hiring and orientation processes



EMP - Highlights

- Staffing Implications (cont.)
 - Impact of technology
 - Training
 - Changing Duties and Classifications
 - Shifting Personnel Resources



EMP - Highlights

- Technology
 - Touches everything
 - Ongoing support is crucial
 - Staffing
 - Infrastructure
 - Equipment/Software



Educational Master Plan

- One component of the planning process
- *Update* every three years
 - 2012-13 looking to 2022
 - 2015-16 looking to 2025
- Major revisions as needed